

EAST ELEVATION

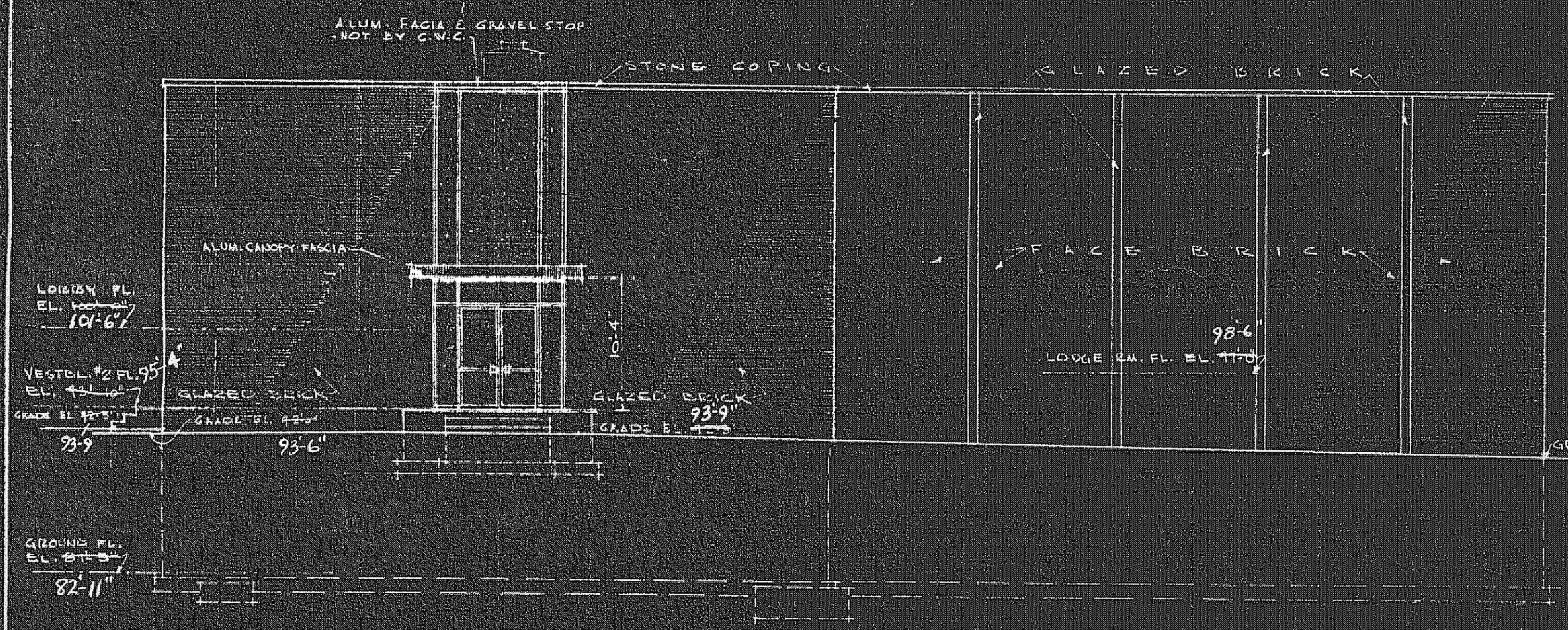
SCALE: 1/8" = 1'-0"

NOTE: FOR DETAILS OF FRONT CURTAIN WALL SEE DWGS. A-7 & A-8.



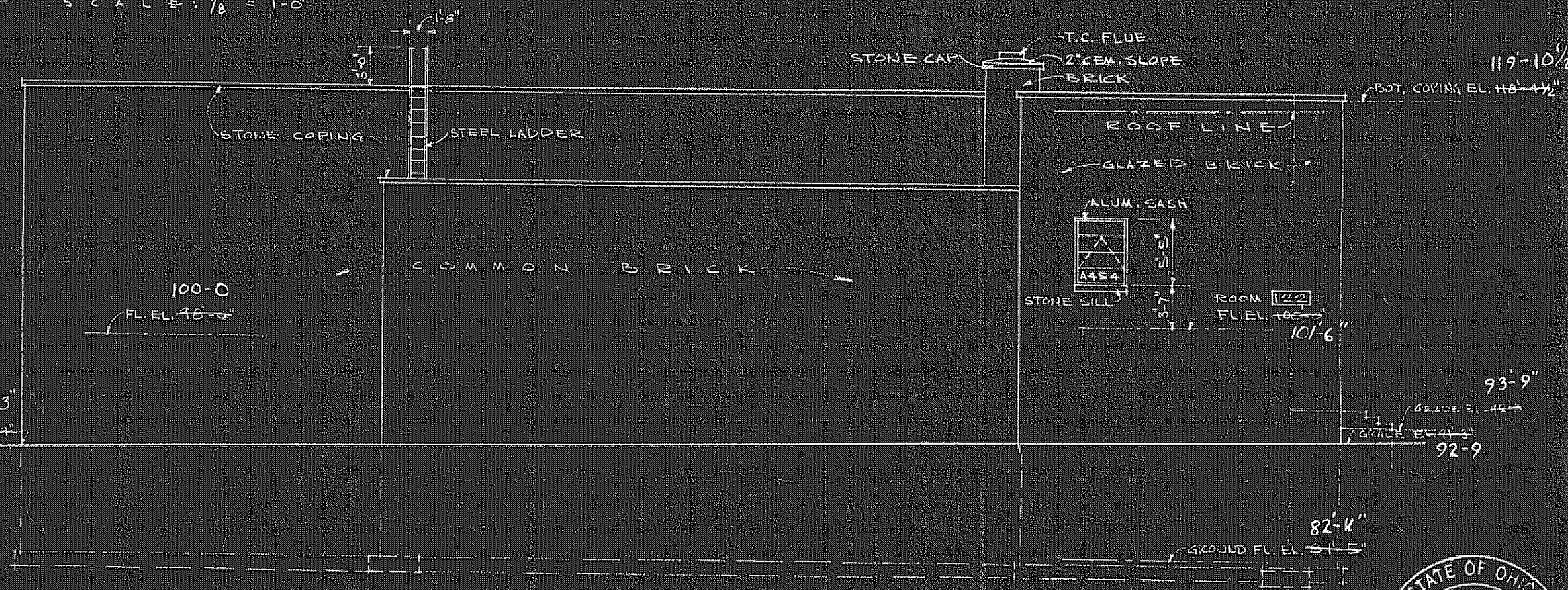
WEST ELEVATION

SCALE: 1/8" = 1'-0"



NORTH ELEVATION

SCALE: 1/8" = 1'-0"



SOUTH ELEVATION

SCALE: 1/8" = 1'-0"

