

FOR BALANCE OF
CAMPOY DETAILS
SEE SECTION E-F SHEET # A-7

TREAT WITH WOOD PRESERVATIVE
4x4 - FASTENED
TO 2x8
16" O.C.

ELASTIC CAULKING - TREMCO

#3-91
1/4" WATER BAR - CONT.
BY C.W.C.

BONNETTE CAST ALUM. IN.
SEALS OFF OUTSIDE
2x2 STEEL
SECTION

1/4" ST. PORCELAIN PANELS BY C.W.C.
TRANSITE CORE

1/2" STEEL
CLOSER

1/2" STEEL
CLOSER

1/2" STEEL
CLOSER

1/2" STEEL
CLOSER

1/2" STEEL
CLOSER

1/2" STEEL
CLOSER

1/2" STEEL
CLOSER

1/2" STEEL
CLOSER

1/2" STEEL
CLOSER

1/2" STEEL
CLOSER

1/2" STEEL
CLOSER

1/2" STEEL
CLOSER

1/2" STEEL
CLOSER

1/2" STEEL
CLOSER

1/2" STEEL
CLOSER

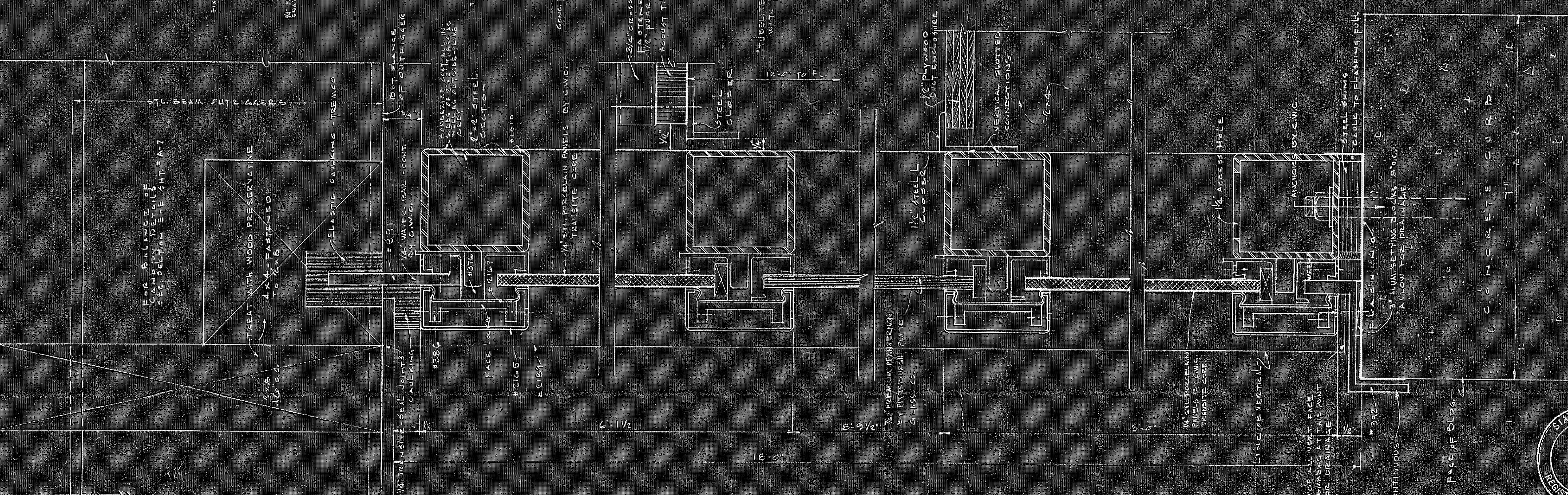
1/2" STEEL
CLOSER

1/2" STEEL
CLOSER

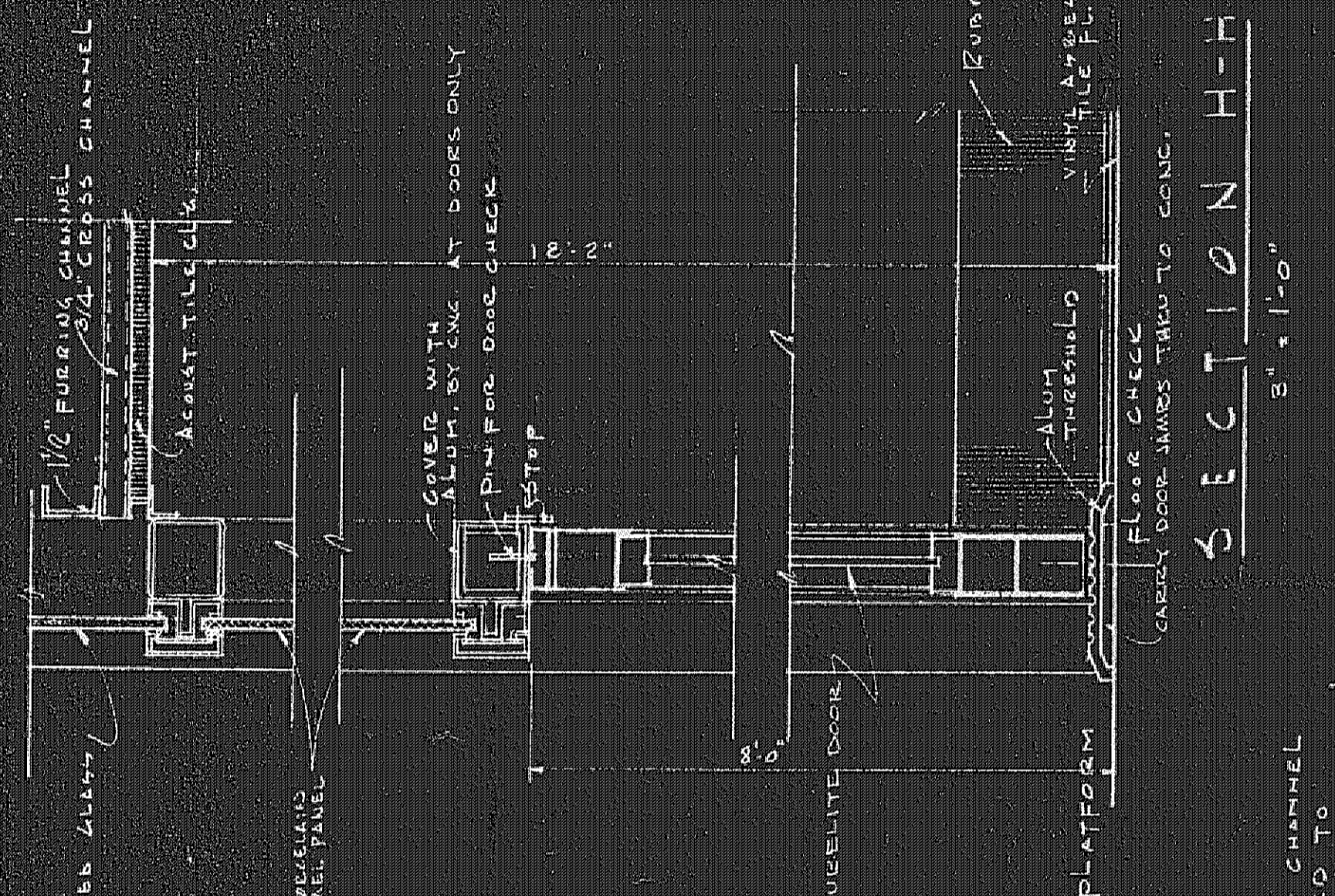
1/2" STEEL
CLOSER

1/2" STEEL
CLOSER

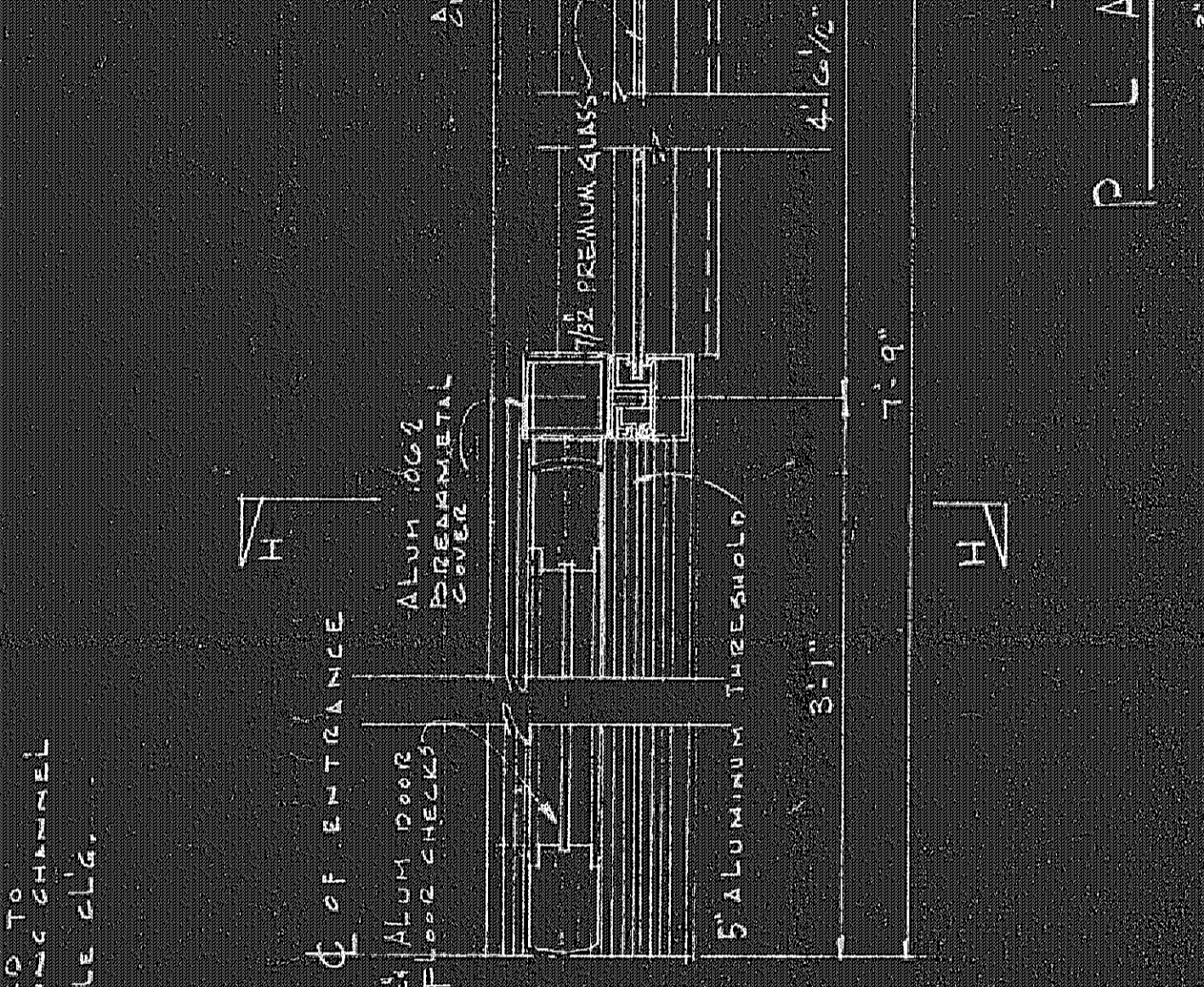
1/2" STEEL
CLOSER



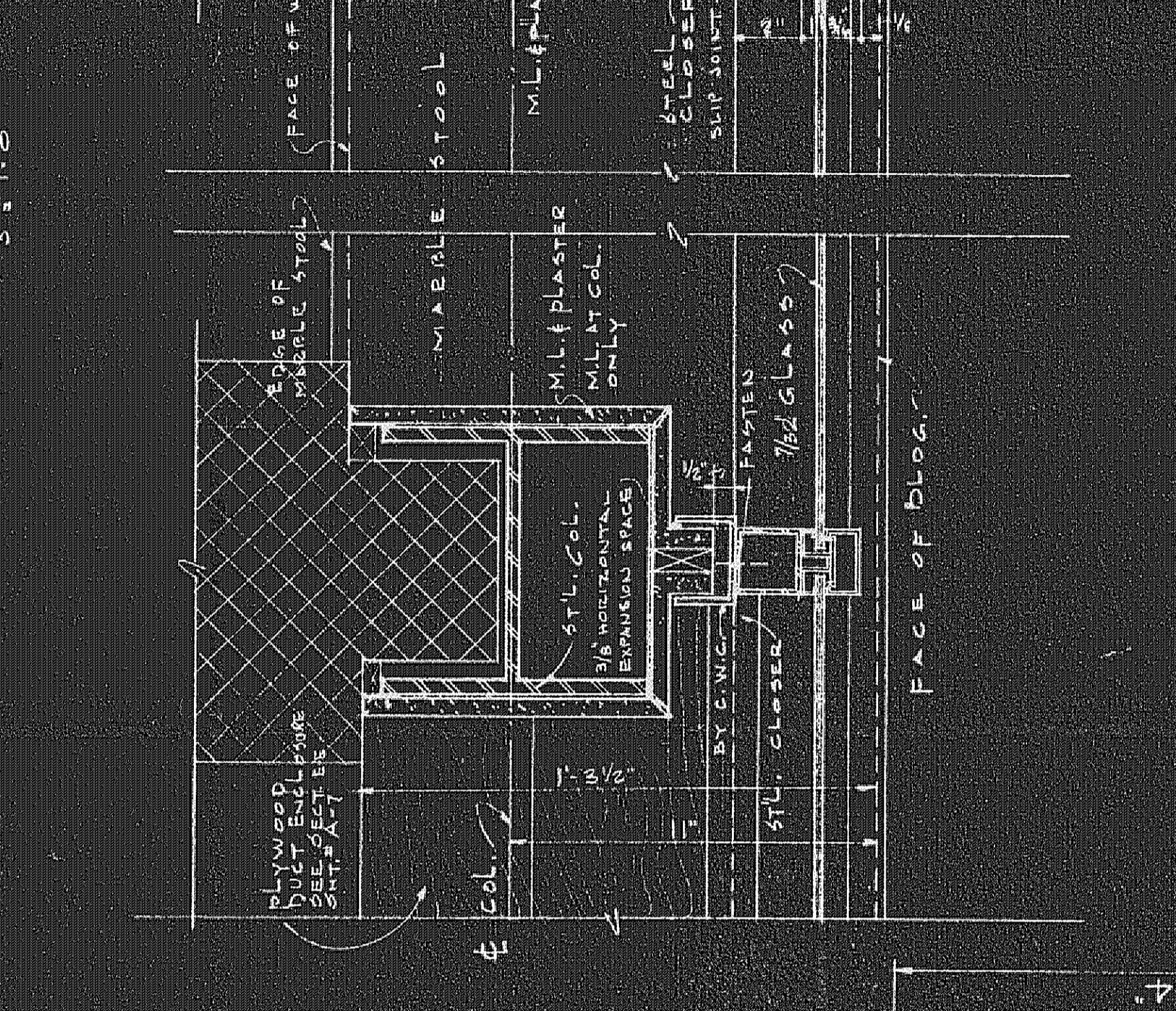
SECTION H-H
3' x 1'-0"



SECTION M-M
3' x 1'-0"



PLAN N
3' x 1'-0"



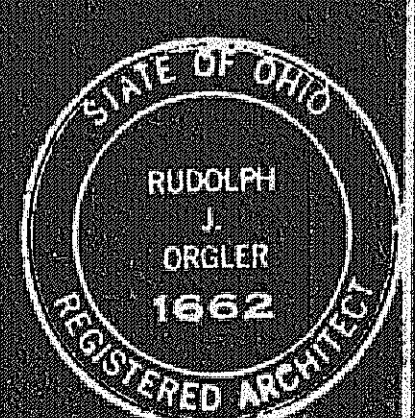
PLAN P
3' x 1'-0"



FOR PLYWOOD
DUST ENCLOSURE
DETAILS SEE SHEET
A-7

NOTE: FOR LOCATION OF SECTIONS
SEE DRAWING # A-6

NOTE: ALL NUMBERS GIVEN TO CURTAIN WALL MEMBERS
REFER TO THESE USED BY THE PITTSBURGH PLATE GLASS CO. - 62X SERIES - CURTAIN WALL



Job No.	Des. By	Checked By	Date	Scale	Sheet No.	Total Sheets
3654A	EO	EO	7-29-62	1/8" = 1'-0"	18	18

DETAIL G-G
SCALE: FULL SIZE